

IMPACT REPORT

2023



SafeParkingLA



MISSION

Safe Parking LA provides safe overnight parking to facilitate stability and housing in Los Angeles County for individuals living in their vehicles, and advocates for fair and equitable treatment and resources for the unhoused.

VISION

Individuals and families living in their vehicles will have an expedited path to housing through a system that opens doors.

VALUES

We strive for connection with others.

We support individual choice.

We treat people with dignity, respect, and compassion.

We act with urgency to make an impact.

TABLE OF CONTENTS

A Message from our Executive Director ...	3
A Message from our Founders	4
Program Overview	5
Participant Spotlight: Michael's Family ...	6
Demographic Highlights and Site Operations	6
Participant Demographics	7
Our Impact	8
Participant Spotlight: David Mays	9
Donor Roster	10-11
Executive and Board Leadership	11

MESSAGE FROM OUR EXECUTIVE DIRECTOR

Greetings!

It is an honor to present Safe Parking LA's 2023 Impact Report, which highlights our strides in serving those experiencing vehicular homelessness in Los Angeles County. As the newly appointed Executive Director, I am grateful for the opportunity to further our mission of providing vital services and case management for our unhoused neighbors living out of vehicles.

I believe deeply in this region. As a native Angeleno, it has defined and informed so much of what makes me who I am today. For that, I am grateful to work directly with our talented staff, board, volunteers, participants, donors, and partners.

Individuals experiencing vehicular homelessness make up the largest percentage of the unsheltered population yet generally receive fewer services than others who are more visibly homeless. Living out of one's vehicle is frequently the first experience of homelessness, representing one of the best opportunities to resolve that crisis before it deepens and results in cyclical homelessness. We can do better, and we must.

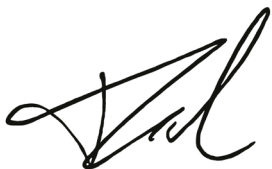
Vehicles offer privacy, security, and mobility, enabling access to social networks and other vital resources. Safe Parking LA's critical work includes preventative services to halt the deepening of homelessness. We act as a shield, preventing households from slipping further into the margins of society and their housing instability.

Though our name suggests parking resources, our services are much greater than that. In addition to providing a safe and secure location for people to sleep, Safe Parking LA's programming collaboratively enacts a housing and services plan through direct case management, where staff work with each of our participants in their journey to stable housing. Our programming works, as we have successfully placed people into stable housing or supported them towards self-resolution.

In the last year, Safe Parking LA has served 512 individuals across seven program locations representing communities as diverse as the San Fernando Valley, West LA, Downtown, Hollywood, Mid-City, and South LA. We serve a diverse and particularly vulnerable community that includes families with children, veterans, seniors, and domestic violence survivors.

We hope the following report informs and motivates you to partner with us in combatting the deepening crisis on the streets of Los Angeles.

In Community,



Matthew Teclé
Executive Director



MESSAGE FROM OUR FOUNDERS

Dear Friends,

As we look back on the past year, we cannot help but be filled with gratitude. To our dedicated community of supporters — including our lived-experience families, volunteers, staff, board members, donors, and funders — we extend our heartfelt thanks. Your commitment to ending vehicular homelessness has been the driving force for the lifesaving work we accomplish through our safe parking program.

We reached a significant milestone in 2023. After five years of fiscal sponsorship under Community Partners, we emerged as an independent agency that runs the largest network of safe parking sites across Los Angeles. As founders, we remember the early years when we dreamed and advocated, along with other passionate volunteers, for the existence of safe parking programs to serve people in crisis. It is remarkable to see our collective efforts become an enduring organization that has helped change thousands of lives.



In celebrating this milestone, we want to take a moment to pay tribute to **Pat and Ira Cohen**, our fellow founders and emeritus board members. Their vision and relentless dedication laid the foundation for Safe Parking LA, and we are forever grateful for their leadership and guidance. We also recognize the important work of Silvia M. Gutierrez, former Executive Director, whose leadership and steadfast service were instrumental in guiding Safe Parking LA through the unprecedented challenges of the COVID-19 pandemic.

Vehicular homelessness has continued to rise due to high costs and a lack of affordable housing. According to the 2024 Greater Los Angeles Homeless Count, over 23,000 people — representing more than 44% of the County's unsheltered population — live in their vehicles on any given night. As more households struggle financially, we remain steadfast in preventing families from falling further into homelessness.

As we step into the next chapter, we do so with urgency and optimism. We are deeply grateful for your continued support, and we look forward to working alongside all of you and our new Executive Director, Matthew Teclé, to end homelessness in Los Angeles. We are honored to be able to provide this vital service that many worked so hard to make possible years ago.

We hope that one day, our services won't be needed. Until then, thank you for your ongoing commitment to Safe Parking LA and the vulnerable individuals and families we serve.

With Gratitude,



Scott Sale MD

Scott R. Sale, MD
Founder and Board Chair



Emily Uyeda Kantrim

Emily Uyeda Kantrim
Founder and Senior Advisor

PROGRAM OVERVIEW

By employing underutilized parking lots, Safe Parking LA provides access and engagement to households whose only source of shelter is their vehicle.

We currently operate in San Fernando Valley, Hollywood, Downtown Los Angeles, and West Los Angeles, including programs on the VA West Los Angeles and Los Angeles World Airport campuses. Since our inception, we have received over 11,000 inquiries and permitted more than 2,500 vehicles for safe parking.

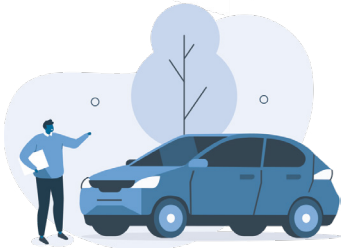
SERVICES PROVIDED

Our safe parking programs are more than a safe place to park. Our services are designed to meet the needs of our community, facilitate safety and stability, and provide an actionable roadmap for participants to return to permanent housing.



COMMUNITY WARMLINE AND INTAKE

Our confidential phone service helps community members struggling with the imminent loss of housing or experiences of vehicular homelessness. We assist households in assessing their situation, connecting to resources and referrals, and enrolling in our safe parking program if appropriate.



SAFE PARKING LOT OPERATIONS

With the help of our partners, we provide secure and legal overnight parking at sites equipped with security personnel, portable toilets, and handwashing stations. Onsite services vary by location and may include wi-fi, mobile clinics, and food distribution as they become available through leveraged resources.



CASE MANAGEMENT AND RESOURCE COORDINATION

Upon enrollment, case managers assess the needs of safe parking program participants, develop personalized housing service plans, and make connections to essential resources and housing solutions. Case managers advocate on the participant's behalf when necessary, such as to advocate for the rights of a child within the school system, advocate for social services, or advocate for consideration for a housing placement.



EMERGENCY FUNDS AND FINANCIAL ASSISTANCE

After 30 days of enrollment, participants may apply for assistance from Safe Parking LA to address financial burdens such as vehicle maintenance, credit repair, first month's rent, and move-in costs. We also provide support in addressing emergency situations, such as urgent vehicle operability issues. Our ability to provide financial assistance depends on the availability of funds.



REFERRALS AND LINKAGES TO HOUSING

In addition to supporting participants in becoming document-ready for the housing application process, Safe Parking LA provides referrals and linkages to housing opportunities participants may not be able to access on their own. This includes working within the Coordinated Entry System and Continuum of Care and helping to secure housing opportunities in the broader community.



PARTICIPANT SPOTLIGHT MICHAEL'S FAMILY

Michael and his wife, Richay, achieved their lifelong goals of owning a home and starting a family. It felt like the couple had “made it.” However, tragedy struck when they lost their one-year-old daughter, leading to disputes with the hospital and a heavy emotional and financial burden. The family welcomed their second daughter, Melanie, soon after.

The destabilizing impact of their daughter's death and the strain on their finances resulted in the loss of housing for the family, who soon found themselves living in their vehicle to save money for their baby's needs. In their search for help, they enrolled in the Vanowen Safe Parking Program.

Safe Parking LA provided the family with assistance to address car maintenance issues—including brakes, tires, and battery replacement—and gas cards to ease transportation costs.

Their case managers successfully advocated for the family's placement into housing so that Michael, Richay, and Melanie no longer had to shelter in their vehicle.

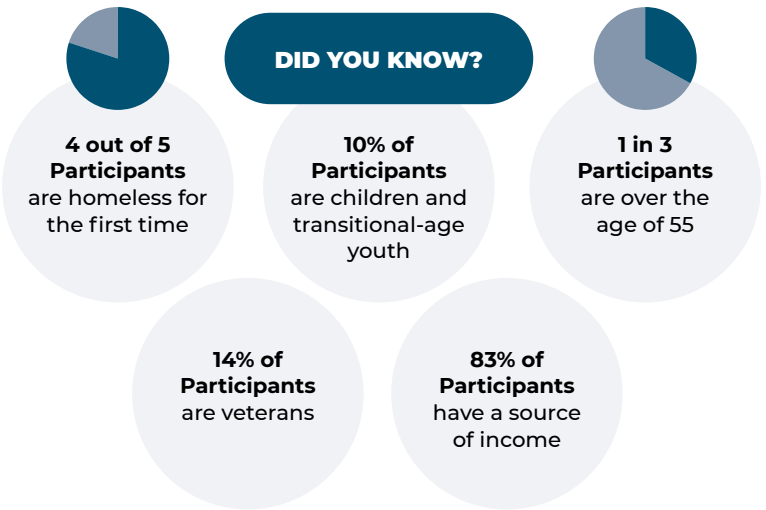
“

Safe Parking LA made it feel like we had shields on our back. It's different when you have advocates looking out for you.

-Michael

”

DEMOGRAPHIC HIGHLIGHTS



THE NEED

According to LAHSA's 2024 Greater Los Angeles Homeless Count, people experiencing vehicular homelessness comprise over 44%—totaling more than 23,000 adults and children—of Los Angeles County's unsheltered population. Within the City of Los Angeles, an estimated 7,755 people live in vehicles and represent 45% of the unsheltered population.

SITE OPERATIONS

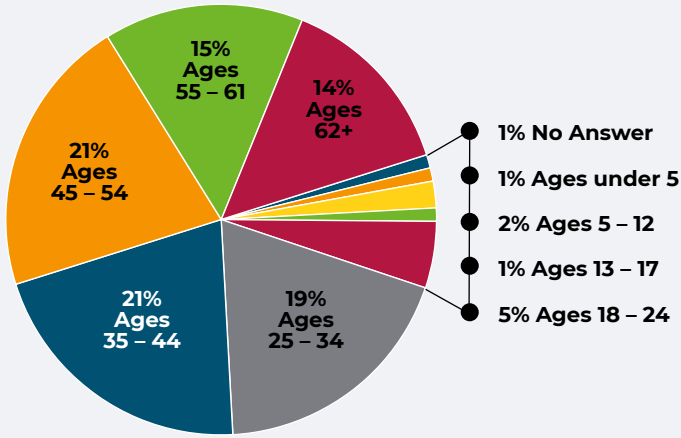
In fiscal year 2022–23, Safe Parking LA operated seven (7) safe parking programs with the capacity to permit 194 vehicles on any given night. Programs were located in Los Angeles County Service Planning Areas (SPAs) 2, 4, and 5.

Our safe parking programs operate overnight, 7 days a week, 365 days a year.

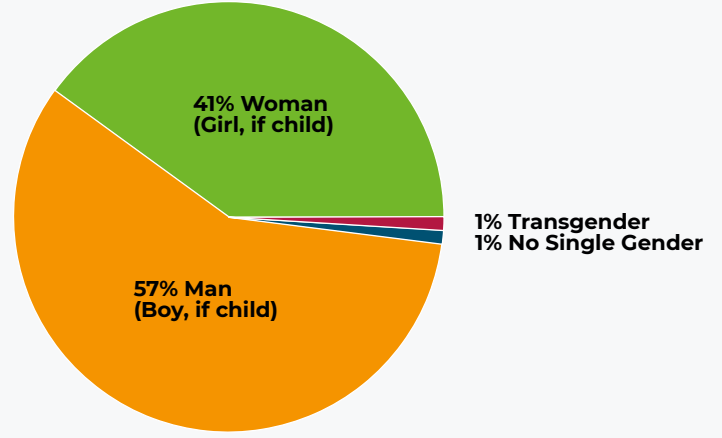
SPA	Location	Parking Spaces
SPA 2	San Fernando Valley	25 spaces
SPA 4	Metro LA	50 spaces
SPA 5	West LA	119 spaces

PARTICIPANT DEMOGRAPHICS

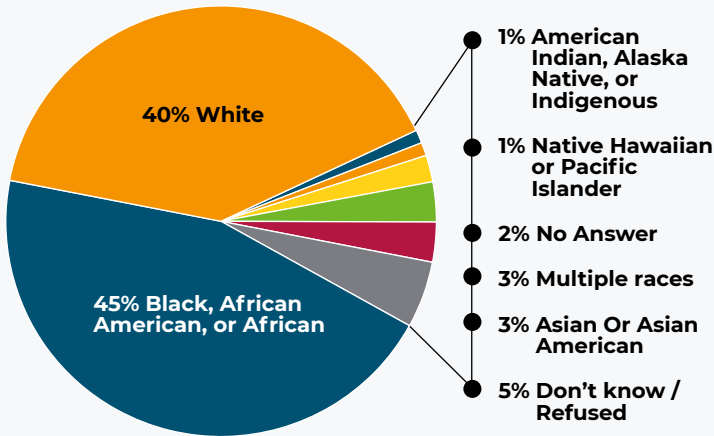
AGE RANGE



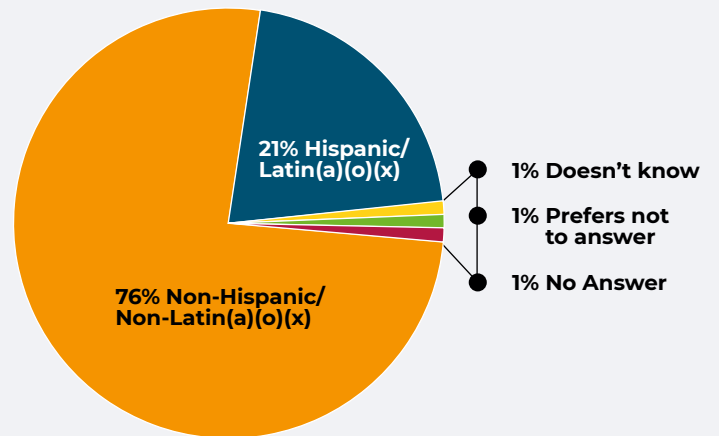
GENDER



RACE



HISPANIC ETHNICITY



PROGRAM PARTNERS

The following partners made our safe parking lot operations possible in fiscal year 2022–23.

Beit T'Shuvah
 City Administrative Office of Los Angeles
 City of Los Angeles Council District 3
 City of Los Angeles Council District 11
 City of Los Angeles Council District 13

Federal Aviation Administration
 Los Angeles City Tourism Department
 Los Angeles Convention Center
 Los Angeles Department of Water and Power
 Los Angeles Homeless Services Authority

Los Angeles World Airports
 St. Mary's Episcopal Church in Koreatown
 West Los Angeles Veterans Affairs
 West Valley Regional Branch Library

OUR IMPACT

YOUR SUPPORT MATTERS

With your help, the following impacts were made possible for fiscal year 2022–23.



1,899

Households

provided with referrals and offered program enrollment



512

Participants

parked safely overnight and got connected to case management services



490

Financial Awards

distributed to participants to help with hardships



\$174,121

Total Amount

awarded in financial assistance and gift cards



33,478

Safe Nights

spent in our program



126

Participants

transitioned into housing



34%

Placement Rate

achieved for participants who exited the program



PARTICIPANT SPOTLIGHT

DAVID MAYS

I got back my sense of dignity. I'm eternally grateful because it's literally the difference between being in a safe place and being on the street. ”

-David

I have worked for over 20 years as a live-in caregiver. When I lost my job, my savings ran out, and I found myself with no place to stay but my car.

I couldn't park just anywhere at night. I had to worry about being harassed by the police, supermarket managers, neighborhood residents and people who wanted to bother me when all I wanted to do was get some sleep and make it to the next day.

Then I found out about a program called Safe Parking LA. I was allowed into their downtown program where I parked for 460 nights.

I don't know what I would have done without the help of people I met there —people like Monica, Demi, Paula, and Joy (wonderful people from the organization). I always felt safe and supported. When my car needed to be fixed, they took care of it. When I needed help putting an ad in the Beverly Hills Courier for work, they paid for the job wanted post. When I was scheduled for an endoscopy at Kaiser, they covered the cost for a motel room so I could get cleaned up—and out—for the procedure.

They were there for me in so many ways. I can't remember it all. I could never, ever repay Safe Parking LA for helping me at one of the lowest points in my life until I was able to transition out and go to a better place.

David Mays attained supportive housing in an East Hollywood property managed by The People Concern. The LA Times featured his story in a two-part column.

DONOR ROSTER

Thank you for your kindness and generosity!

\$50,000+

California Community Foundation
City of Beverly Hills
Herbert R. & Jeanene C. Mayer Foundation
The Ralph M. Parsons Foundation
Saint John's Health Center Foundation
Lori Z. and Scott R. Sale, MD ♥
Tech Sgt. Jack Kushner Ret'd Foundation, Inc.

\$10,000 TO \$49,999

The Ahmanson Foundation
The Charles H. Stout Foundation
George Hoag Family Foundation
Jewish Community Foundation of Los Angeles
Gregory P. and Rochelle Kushner
Leonard Hill Charitable Trust
June and Simon K.C. Li
Los Angeles County Supervisor Holly J. Mitchell
Pfaffinger Foundation
Sisters of St. Joseph Healthcare Foundation
Social Justice Partners Los Angeles
United Way of Greater Los Angeles
John B. and Gillian Wagner

\$1,000 TO \$9,999

Peter Abrams and Doran Clark
Apple
Daniel E. Behrendt
Patricia O. and Ira G. Cohen
Gary S. Cohn and Paula Hoffman
Peter Fredericks
Alisa J. Freundlich
Funding Passion and Love Foundation, Inc.
Robert and Connie Gordon
Grace Helen Spearman Charitable Foundation

Bernard J. and Carolyn A. Hamilton
Nancy Hammerman and Peter Cowen
Hanley Foundation
Roosevelt Madison
Laurie and Natan Minc
Noah A. Mitz
Robert C. and Barbara Raban
James E. Radford
Todd and Ani Sherman
Howard and Stephanie Sherwood
Ellen Sloan
SRAR Charitable Foundation
Starbucks Corporation
Starbucks Foundation
Carole A. Sussman ♥
Emily Uyeda Kantrim and Rudy Salinas
Gail and Curtis Winterfeld
Matt Wersinger and Roya Parivar

UP TO \$999

Abbott Laboratories
Louis Abramson
Sean Baker
Matt Barnett
Marya Barr
Sheyda Bautista-Saeyan
Eve Beerman
Hillary Benefiel
Nancy Bernstein
Victoria and Nicholas Berry
James R. Bickhart, Jr.
Ori S. Blumenfeld, Esq.
Marnie Bodek and Ed Moss
Karen Borchgrevink
Stephen E. and Nadine Bendit Breuer
Madeline Brozen
Jennifer R. Buchman
Dawn Cannon
Florida Cano ♥
Beth Carroll
Linton Carter
Kathleen E. Cejka
Michelle J. Chenal-Ducey
Tracy Choy
Kathryn M. Clare
Carol Clark

Alex Coleridge
Indigo Cowherd
Tess Cozine
Justin Curry
Michaela Dalton
William Daly
Doris and Roy Danchick
Pat Davidson
Ann C. Davis
Elena De La Cruz
Ashley De La O
Daniel Dekker
Sydney Denman
Steven DePaul
Dr. Agnes Dickson
Lenore Dowling
Downtown Women's Center
Susan Duquesnel
Sean Erwin
Rachel Fox
Daniel Freed
Marilyn and Les Frost
Teddy Fuss
Michael Gifford
Susan Given
Patricia Glaser
Sunil Goklani
Russell Golding
Ruth Gomez
Robert Gookin
Susan M. Gordon
James C. Gould
Lea Gould
Susan L. and Alan Greenberg
Ronald J. and Carolyn Greitzer
Matthew Grohman
Colin Gunther
Jaron H
Tywanda Haney
Jenny and Brandon T. Hanner
Leighton Hansel
Janna Bodek Harris and James Harris
Imke Hart
Steven Z. Heckler
Monica Higgins
Victor and Korinne Hinderliter
Christina and Michael A. Houlemard, Jr.
Ted and Judy Howells
David S. and April J. Hufford
Thierry Ihara

Immaculate Heart Community
Shante Colleen Jackson
Libby Jacobsen
Michael A. Jewsbury
Grace Jo
Cynthia Jones
Leila A. Justen
John R. Keelin
Dana and Paul Kiesel
KLUH Corp
Ilana Y. Koch
Michael and Ronni Kopulsky
Sunita Lalwani
Trisha Langlois
David Lapin
Alex Lara and Andrew Morales
Steve Lardner
Andrew Le
Michelle Leibel
Margaret Ellen Leonard
Jennifer Levin
Teresa and David Levine
Jazmine Llanes
Debbie Stein and Sidney Machtinger Macy's
Sally Malone
Rosie McCann
Breanne McGee
Kerry McOsker
Sachin Medhekar
Gloria Mendelsohn
Clifton Merchant
Sarika Mirchandani ♥
Mads Bak Moller
Fernando Morales
Michael Morgenstern
Michael Mueller
Catherine B. and Kenneth Murphy
Linda Nathanson
Isabel Nelson
Netflix
Anh Nguyen
Alla Norris ♥
Theresa D. and Robert J. Norris, Jr. ♥
Elizabeth Oh
Harry Oppenheimer
Sheila A. Ozalis
Megan Parsons
Paypal Giving Fund
Chris Pellegrino
Susan Pencall

Ian Peters
Jenny and Gregory Platt
Arnali Ray
Leslie Rennie-Hill
Marsha L. Respress
Alan Rich
Lindsey Richard
Vernon A. Roloff
Jennifer Rosenbaum
Adrienne and Stanford K. Rubin
Ana Rubyn
Randa Sue Sale
Safa Saleem
Alejandra Salinas
Alice Santos ♥
Alex Sato
Maribeth Scharlach
Andrew A. and Linda Scott
Don and Rasheedah Scott
Jean Scott
Jeff Scott
Paige Shannon
Mellonise Shorter
Charline A. Sistrunk
Catherine A. Smith
Carol Sobel
Octavio Solorio ♥
Alan A. and Michaela Sozio ♥
Gregory Sroka
Josh and Shani Bocian Steinberg ♥
Keith Stoler
Rev. Toni Stuart
Wayne Tashjian
Daniel Taub
Matthew and Karol Tecle
Emily Thomas
Mel Tillekeratne
Sherry Uyeda
Paula Van Ness
Savanah Walseth
Pauline Marks Weinberg
James S. and Carole Wenger
Anne D. Willoughby
George Wilson
Pete Wilson
Sheila Wilson
Tim and Alice Wilson
Michael Yang
Tianxiang Zhuo

IN-KIND DONATIONS

AAA	Hang Out Do Good	Our Big Kitchen Los Angeles
AI LA Community, Inc.	Harp Services LLC	Lori Z. and Scott R. Sale, MD
Cristela Alvarado	Christina and Michael A. Houlemard, Jr.	Daniel Shaw and Mirna Camarena
Dina Brown	Karsh Family Social Service Center	SimplyHelp Foundation
Bundle of Kindness	Lido Consulting	Sisters On the Streets
The Campbell Center	Los Angeles City Tourism Department	St. Mary's Episcopal Church
County of Los Angeles Department of Health	Los Angeles Convention Center	Suitcase Joe Foundation
Crown Auto Service	National Council for Mental Wellbeing	Starbucks Corporation
Deborah Kekone Graphic + Web Design	Theresa D. and Robert J. Norris, Jr.	UCLA Hunger Project
Ashley De La O		VITU
Cassie Elkins		
Jaime Engbrecht		

TRIBUTES

The following contributions were made to Safe Parking LA in tribute to friends and loved ones.

In honor of Cynthia Cohen
Maribeth Scharlach

In honor of Pat and Ira Cohen
Eve Beerman
Doris and Roy Danchick
Susan L. and Alan Greenberg
Debbie Stein and Sidney Machtlinger
Pauline Marks Weinberg

In honor of Gary S. Cohn
Michael and Ronni Kopulsky

In memory of Jonathan Field
Michael Morgenstern

In honor of Silvia M. Gutierrez
Lenore Dowling

In honor of Nancy Hammerman
Peter Cowen
James S. and Carole Wenger

In honor of Amelia Marie
Leslie Rennie-Hill

In honor of Tim McOsker
Kerry McOsker

In honor of Robert Merchant
Clifton Merchant

In honor of Sanford Mitz
Noah A. Mitz

In honor of Andrew Morales
April J. and David S. Hufford

In honor of Don and Shirley Napier
Rosie McCann

In honor of Robert Norris
Monica Higgins

In memory of Bob Raban
Robert C. and Barbara Raban

In memory of Randa Sue Sale
Patricia Glaser
Ronald J. and Carolyn Greitzer
Dana and Paul Kiesel
Teresa and David Levine

In honor of Scott Sale
Jennifer Levin
Tianxiang Zhuo

In memory of Joe Skyward
Chris Pellegrino

In honor of Emily Uyeda Kantrim
Sherry Uyeda

In honor of Tim Wilson
Linton Carter
Pat Davidson
George Wilson

EXECUTIVE STAFF

Matthew Teclé
Executive Director

Carmela Carreño
Director of Development

Andrew Morales
Director of Programs

Tamara Arredondo
Director of Operations

FOUNDERS AND BOARD OF DIRECTORS

Scott R. Sale, MD
Founder and Board Chair

Robert J. Norris, Jr.
Past Chair

Tim Wilson
Vice Chair

Ellen Sloan
Treasurer

Daniel Behrendt
Secretary

Sheyda Bautista-Saeyan

Ori S. Blumenfeld, Esq.

Gregory P. Kushner, CPA

Nancy Hammerman

Victor Hinderliter

Mellonise Shorter

Matt Wersinger

Ira Cohen
Co-Founder and Emeritus

Pat Cohen
Co-Founder and Emeritus

Emily Uyeda Kantrim
Co-Founder and Senior Advisor

♥ Recurring and Pledge Donors

Thank you for making a positive difference in the lives of our unhoused neighbors. We take care to recognize our supporters and apologize for misspellings or omissions. Please contact give@safeparkingla.org with any updates or corrections.

Questions about the Impact Report?

Development Department

(323) 210-3375 ext. 3

give@safeparkingla.org

Safe Parking LA was a project of Community Partners during the fiscal year 2022–23. As of October 1, 2023, Safe Parking LA is an independent nonprofit organization (Federal Tax ID 87-3148967).



SafeParkingLA

Headquarters

961 S. Mariposa Avenue
Los Angeles, CA 90006

Mailing Address

PO Box 17157
Los Angeles, CA 90017

Contact

(323) 210-3375

info@safeparkingla.org